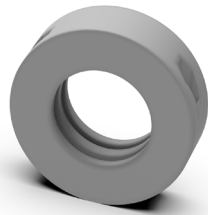


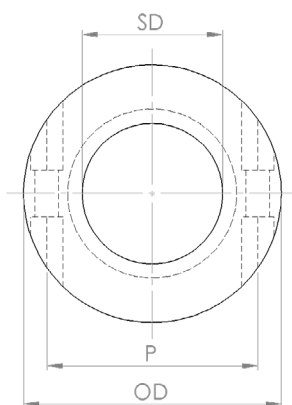
# Shaft Clamps

## Shaft Clamp description



Our Shaft Clamps can be used as locking collars to prevent sprockets from moving on the drive and/or idle shaft. Due to its split structure, the Shaft Clamp can easily be removed and replaced, thereby creating less down-time.

For more information regarding setup, possibilities, customization and options feel free to contact us!



Front-view of the Shaft Clamp.

## Shaft Clamp data

P:	Thickness:	OD:	SD:
29,0 mm.	14,0 mm.	Ø 40,0 mm.	Ø 20,0 mm.
35,0 mm.	14,0 mm.	Ø 45,0 mm.	Ø 25,0 mm.
45,0 mm.	16,0 mm.	Ø 55,0 mm.	Ø 30,0 mm.
47,0 mm.	16,0 mm.	Ø 60,0 mm.	Ø 35,0 mm.
51,0 mm.	18,0 mm.	Ø 64,0 mm.	Ø 40,0 mm.
51,0 mm.	18,0 mm.	64,0 mm *	40,0 mm *

\* Square, OD 64,0 x 64,0 mm, SD 40,0 x 40,0 mm.

*Interested in Shaft Clamps or need more information?  
Feel free to contact us!*