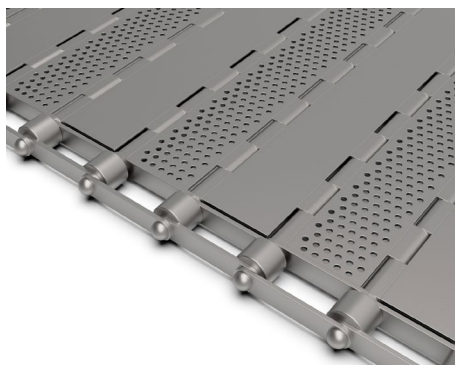
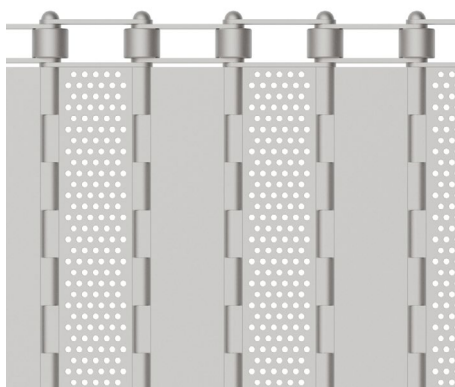


Plate Link Belt



Belt data

- Pitch: 50,0 mm.
- Belt width: Up to 6.000,0 mm.
- Cross rod dia: Ø 7,0 mm or Ø 12,0 mm for Heavy-Duty.
- Plate thickness: 1,5 mm or 2,5 mm for Heavy-Duty.
- Strength: Ideal for medium-heavy transportation.
- Material: AISI 304, AISI 316.
- Applications: Food & non-food industrial applications.
- Options: Side and/or centre chain.
Side plates.
Flights.



Top-view of the Plate Link Belt.

Belt description

Our Plate Link Belts are mostly being used in tunnel freezers and in other industries where strength is required. To ensure a strong and reliable belt, DK Transportbaand adds reinforcement links and side and/or centre chains to improve belt strength and life-span.

Our Heavy-Duty Plate Link Belts are specifically designed for high load applications where strength and reliability are keywords. With thicker plates, links, and cross rods, the Heavy-Duty version is constructed for the most demanding applications!

For more information regarding setup, possibilities, customization and options feel free to contact us!

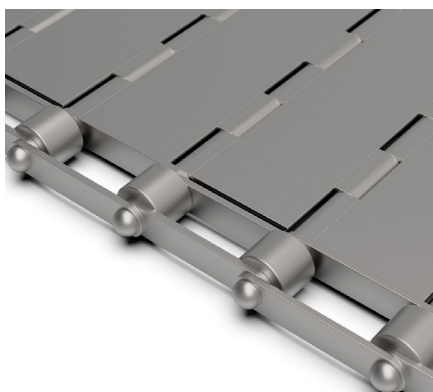


Plate Link Belt with a closed surface.



Plate Link Belt with a perforated surface.

*Interested in the Plate Link Belt or need more information?
Feel free to contact us!*